



# Tokyo 2020 Olympic Games

## Sailing

### Sailing Instructions

Version 15 June 2021

Change Log

Amendment 01: 2.2, 2.8, 4.1, 15.2, 19.1, 19.4

## 1. RULES

*Additional Rules referenced in the Notice of Race or Sailing Instructions will be published on the World Sailing website ([tokyo2020.sailing.org](http://tokyo2020.sailing.org))*

- 1.1 The regatta is governed by the rules as defined in *The 2021-2024 Racing Rules of Sailing* (RRS). Other documents under RRS Definition: Rule (g) are listed in NoR 1.
- 1.2 For the Men's Skiff, Women's Skiff and Mixed Multihull Events, RRS 44.1 and RRS P2.1 are changed so that the Two-Turns Penalty is replaced by the One-Turn Penalty.
- 1.3 In RRS 44.2 insert after the first sentence: "However, if Mark 1a is set, a boat may take a penalty for an incident in the zone around Mark 1 or on the leg between Mark 1 and Mark 1a, as soon as possible after leaving the zone around Mark 1a".
- 1.4 For Medal Races World Sailing Addendum Q, Umpired Fleet Racing, will apply and changes a number of racing rules.
  - 1.4.1 The Addendum Q, Umpire Fleet Racing can be found at <https://www.sailing.org/documents/racingrules/experimental-rules.php>
  - 1.4.2 The Addendum Q has been approved by World Sailing in accordance with rule 86.2 and Regulation 28.1.3. It applies to all Medal Races and all pre-race or post-race activities related to them.
  - 1.4.3 Addendum M of the SIs includes changes to the Sailing Instructions for Medal Races.
- 1.5 Boats are required to display Advertising and/or event branding in accordance with instructions issued by the Organizing Authority.

## 2. [DP] [NP] SAFETY REGULATIONS

- 2.1 [DP] RRS 40.1 applies at all times while afloat except:
  - 2.1.1 for all athletes, when not racing and alongside a registered support vessel which has its engine off, or
  - 2.1.2 for the Men's and Women's Windsurfer Events, RRS 40.1 does not apply from the display of the orange flag for each race until 5 minutes after finishing. However, if flag Y is displayed with the orange flag, RRS 40.1 continues to apply.
- 2.2 Boats not leaving the harbour for a scheduled race shall promptly notify **Race Officials Secretariat**.
- 2.3 [SP] Before leaving shore, athletes shall personally deposit their accreditation at the Beach Master.
- 2.4 [SP] On returning to shore or when no more races are scheduled for that boat for the day athletes shall personally collect their accreditation at the Beach Master before their protest time limit.
- 2.5 [SP] Before leaving shore to race, an athlete shall personally collect their boat's tracking module at the Beach Master.
- 2.6 [SP] When no more races are scheduled for a boat on that day, an athlete or support team member shall deposit their tracking module at the Beach Master before their protest time limit.

2.7 [SP] A boat that retires from racing shall notify the Race Committee before leaving the race area if possible and shall complete a retirement declaration form at the Race Officials Secretariat as soon as possible after returning ashore.

2.8 Tsunami warnings:

2.8.1 A tsunami warning will be broadcast over **Very High Frequency** and **personal mobile radios**.

2.8.2 Races will be abandoned using **flag N** over a black and orange pennant and all boats and vessels shall head to the tsunami evacuation position. The signal **vessel** will display flag L.

2.8.3 The tsunami evacuation position is at: N35° 15'. E139° 30', southeast of the Fujisawa race area and southwest of the Sagami race area.

2.8.4 On arrival at the tsunami evacuation **position**, athletes and support persons shall register with their race committee signal vessel.

### 3. [DP] CODE OF CONDUCT

3.1 Athletes and support persons shall:

3.1.1 comply with any reasonable request from a regatta official;

3.1.2 handle any boats and equipment provided by the Organizing Authority with proper care and seamanship, without interfering with its functionality, and in compliance with the ER; and

3.1.3 not in any way interfere with the functionality of supplied media or timing equipment.

3.2 [SP] Boats not racing shall avoid the area where boats are racing and any official vessel.

3.3 [SP] Boats that are on a race area to which they are not assigned shall avoid the area where boats are racing and any official vessel.

### 4. COMMUNICATIONS WITH ATHLETES

4.1 Notices will be posted on the Official Notice Board located in Azumaya (the permanent building between the cruiser marina and Sport Information).

4.2 Notices will also be posted at <https://www.sailing.org/tokyo2020>. Failure to post a notice on the website will not be grounds for redress. This changes RRS 62.

4.3 Flag L will only be displayed ashore when a notice affecting that day's racing is posted which:

4.3.1 makes a change of race area;

4.3.2 makes a change of warning signal time; or

4.3.3 changes a sailing instruction,

This changes Race Signals.

4.4 Signals ashore will be displayed from the Sailing Centre.

4.5 When flag AP is displayed ashore, '1 minute' is replaced with the times in minutes shown below in the Race Signal AP.

| Race Area          | Race Signal AP not less than time |
|--------------------|-----------------------------------|
| Enoshima, Kamakura | 30                                |
| Fujisawa, Zushi    | 60                                |
| Sagami, Hayama     | 75                                |

- 4.6 [SP] [NP] A boat shall not leave the shore until flag D is displayed ashore. The warning signal will be made not less than the time in minutes shown below after flag D is displayed or not before the schedule time, whichever is later.

| Race Area          | Warning Signal not less than |
|--------------------|------------------------------|
| Enoshima, Kamakura | 30                           |
| Fujisawa, Zushi    | 60                           |
| Sagami, Hayama     | 75                           |

- 4.7 [DP] When flags AP over H or N over H are displayed from a Race Committee vessel, all boats shall immediately return ashore and shall wait there for further signals. (This changes Race Signals AP over H and N over H.)

## 5. CHANGES TO SAILING INSTRUCTIONS

- 5.1 Except for changes to the schedule of races and race area assignments, changes to the Sailing Instructions will be posted either:
- 5.1.1 no later than 2 hours before the scheduled time of the first race affected; or
  - 5.1.2 no later than 15 minutes before flag AP is removed for a race that is affected.
- 5.2 Any changes to the Sailing Instructions will be approved by a World Sailing Technical Delegate.

## 6. FORMAT OF RACING

- 6.1 The format for each Event consists of an opening series and a medal race.
- 6.2 Opening Series

For the opening series of each Event the number of races scheduled is as follows:

| Event   | Number of Races | Maximum Races per Day |
|---|-----------------|-----------------------|
| Men's One Person Dinghy<br>Women's One Person Dinghy<br>Men's One Person Dinghy Heavyweight<br>Men's Two Person Dinghy<br>Women's Two Person Dinghy | 10              | 3                     |
| Men's Windsurfer<br>Women's Windsurfer  | 12              | 3                     |
| Men's Skiff<br>Women's Skiff<br>Mixed Multihull   | 12              | 4                     |

### 6.3 Medal Race

- 6.3.1 A medal race will be scheduled for each Event with 6 or more opening series races completed.
- 6.3.2 The 10 boats ranked highest in the opening series will be assigned to compete in the medal race.
- 6.3.3 Initial assignments to a medal race will be based on the ranking available at 1800 the day before a medal race. Any changes to the initial assignments will be posted no later than 0800 on the day of the medal race. The International Jury may extend these time limits.

## 7. [DP][SP] RACE AREAS AND FIELD OF PLAY

- 7.1 All boats shall remain in the Field of Play at all times whilst afloat. No part of a boat shall cross the boundary. While a boat is racing, the boundary ranks as an obstruction.
- 7.2 If any part of a boat crosses the boundary of the Field of Play, she may be subject to security quarantine and search before being permitted back into the Venue. The actions of the Organizing Authority relating to security quarantine and searches will not be grounds for redress. This changes RRS 62.

## 8. SCHEDULE OF RACES AND RACE AREA ASSIGNMENTS

- 8.1 The race schedule, including the time of the first warning signals and assignment of Events to race areas, is shown in SI Addendum B.
- 8.2 The Race Committee will post an update to SI Addendum B on a daily basis, no later than 1900 the previous evening.
- 8.3 The Race Committee may reassign an Event to any race area no later than 2 hours before the scheduled starting signal. However:
  - 8.3.1 when flag AP is displayed ashore, the race area may be changed by posting a notice until 15 minutes before the AP is removed; and
  - 8.3.2 when flag AP is displayed afloat, the race area may be changed. The Race Committee will display flag L over the Event(s) flag and move to the new race area.
- 8.4 Once 6 opening series races have been completed, the Race Committee:
  - 8.4.1 will continue the opening series on any remaining opening series days; and
  - 8.4.2 will only use an opening series reserve day if racing is behind schedule at that point.

- 8.5 A medal race will not be scheduled unless at least 6 opening series races have been completed. If necessary, the Race Committee will use the reserve day, the medal race day and the reserve medal race day to complete at least 6 opening series races.
- 8.6 The Race Committee will run a medal race on the medal race day or the reserve medal race day once 6 opening series races have been completed. However, a medal race will never be scheduled on the same day as an opening series race for that Event.

## 9. COURSES

- 9.1 The diagrams in SI Addendum C show the courses, the course designations, the approximate angles between legs, the order in which marks are to be passed, and the side on which each mark is to be left.
- 9.2 No later than the warning signal, the race committee starting vessel will display the course signal and, except for Men's Windsurfer and Women's Windsurfer Events, the approximate compass bearing of the first leg.

## 10. MARKS

- 10.1 Marks 1, 2, 3, and 4, or associated gate marks, will be **truncated cones** as follows:

| Race Area | Marks 1, 2, 3, 4 | New Mark for Marks 1 & 2     | VHF Channels |
|-----------|------------------|------------------------------|--------------|
| Enoshima  | Yellow           | Yellow with a black band     | 87           |
| Kamakura  | Pink             | Pink with a black band       | 88           |
| Fujisawa  | Orange           | Orange with a black band     | 10           |
| Sagami    | Lime Green       | Lime Green with a black band | 72           |
| Zushi     | Yellow           | Yellow with a black band     | 9            |
| Hayama    | Red              | Red with a black band        | 71           |

- 10.2 Mark 1a will be an orange cylindrical buoy.
- 10.3 The starting and finishing line marks will be race committee vessels or inflatable marks of the same colour as the course marks.
- 10.4 In the event that a gate mark is missing and has not been replaced with an object displaying flag M, the remaining mark shall be rounded to port.

## 11. EVENT FLAGS

Event flags will be class insignia on the following background:

| Event                               | Class Insignia | Background Colour |
|-------------------------------------|----------------|-------------------|
| Men's Windsurfer                    | RS:X           | White             |
| Women's Windsurfer                  | RS:X           | Light Blue        |
| Men's One Person Dinghy             | Laser Standard | White             |
| Women's One Person Dinghy           | Laser Radial   | Light Blue        |
| Men's One Person Dinghy Heavyweight | Finn           | White             |
| Men's Two Person Dinghy             | 470            | White             |
| Women's Two Person Dinghy           | 470            | Blue              |
| Men's Skiff                         | 49er           | White             |
| Women's Skiff                       | 49er FX        | Light Blue        |
| Mixed Multihull                     | Nacra          | White             |

## 12. THE START

- 12.1 The starting line will be between a staff displaying an orange 'Start' flag on the race committee vessel at the starboard end and either
- 12.1.1 the course side of the port-end inflatable starting mark, or
  - 12.1.2 a staff displaying an orange 'Start' flag on the race committee vessel at the port end.
- 12.2 [DP] A buoy may be attached to the race committee starting vessel anchor line just below keel depth. Boats shall not pass between this buoy and the race committee starting vessel at any time. This buoy is part of the race committee starting vessel ground tackle.
- 12.3 [DP] When a starting sequence is in progress, boats whose warning signal has not been made shall avoid the starting area. The starting area is defined as the area 75 meters from the starting line and marks in all directions.
- 12.4 RRS 26 and Preparatory Signals in Race Signals are deleted. Races will be started using the following signals. Times shall be taken from the display of visual signals and the absence of a sound signal shall be disregarded. This changes RRS 26, Race Signals and RRS P5.2(c).

| <i>Minutes before starting signal</i> | <i>Visual signal displayed</i> | <i>Visual signal removed</i>                                     | <i>Sound signal</i> | <i>Means</i>                 |
|---------------------------------------|--------------------------------|--|---------------------|------------------------------|
| 6                                     | Event flag                     |  | No sound            | Event to start               |
|                                       | P, U, or Black flag            |  |                     | Starting Penalty<br>P = None |
|                                       | O or R flag, if applicable     |  |                     | RRS P5 (RRS 42)              |
| 5                                     | White flag with number 5       |  | 1                   | Warning signal               |
| 4                                     | Blue flag with number 4        | White flag   | 1                   | Preparatory signal           |
| 3                                     | Pink flag with number 3        | Blue flag  | 1                   | 3 minutes                    |
| 2                                     | Red flag with number 2         | Pink flag  | 1                   | 2 minutes                    |
| 1                                     | Yellow flag with number 1      | Red flag   | 1 long              | 1 minute                     |
| 0                                     | Green flag                     | Yellow flag  | 1                   | Starting signal              |
| +1                                    |                                | Green flag,<br>Event flag,<br>P, U or Black flag,<br>O or R flag | No sound            |                              |

12.5 To alert boats that a race or sequence of races will begin soon, the orange starting line flag will be displayed with 1 sound at least 5 minutes before a warning signal is made.

12.6 The warning signal for each succeeding race will be made as soon as practicable.

### **13. COURSE CHANGES**

13.1 To change the next leg of the course, the Race Committee will (a) lay a new mark, or (b) move the finishing line, or (c) move the leeward gate. When a new mark is laid, the original mark will be removed as soon as possible. When in a subsequent change a new mark is replaced, it will be replaced by an original mark. When Mark 1 has been replaced, Mark 1a is no longer a mark of the course. It will be removed as soon as practicable. This changes RRS 33.

13.2 Courses will not be shortened. This changes RRS 32.

### **14. THE FINISH**

14.1 The finishing line will be between a staff displaying a blue 'Finish' flag on the race committee vessel and either:

14.1.1 the course side of the nearby inflatable finishing mark, or



14.1.2 a staff displaying a 'Blue' flag on the nearby race committee vessel.

## 15. TIME LIMITS AND TARGET TIMES

15.1 For opening series races, time limits and target times in minutes are as follows:

| Event                               | Time Limit | Mark 1 Time Limit | Finish Window | Target Time |
|-------------------------------------|------------|-------------------|---------------|-------------|
| Men's Windsurfer                    | 45         | 20                | 10            | 20-25       |
| Women's Windsurfer                  | 45         | 20                | 10            | 20-25       |
| Men's One Person Dinghy             | 75         | 25                | 15            | 50          |
| Women's One Person Dinghy           | 75         | 25                | 15            | 50          |
| Men's One Person Dinghy Heavyweight | 75         | 25                | 15            | 50          |
| Men's Two Person Dinghy             | 75         | 25                | 15            | 50          |
| Women's Two Person Dinghy           | 75         | 25                | 15            | 50          |
| Men's Skiff                         | 50         | 20                | 10            | 30          |
| Women's Skiff                       | 50         | 20                | 10            | 30          |
| Mixed Multihull                     | 50         | 20                | 10            | 30          |

15.2 For medal races, time limits and target times in minutes are as follows:

| Event                               | Time Limit | Mark 1 Time Limit | Finish Window | Target Time |
|-------------------------------------|------------|-------------------|---------------|-------------|
| Men's Windsurfer                    | 40         | 10                | 10            | 20          |
| Women's Windsurfer                  | 40         | 10                | 10            | 20          |
| Men's One Person Dinghy             | 40         | 15                | 10            | 25          |
| Women's One Person Dinghy           | 40         | 15                | 10            | 25          |
| Men's One Person Dinghy Heavyweight | 40         | 15                | 10            | 25          |
| Men's Two Person Dinghy             | 40         | 15                | 10            | 25          |
| Women's Two Person Dinghy           | 40         | 15                | 10            | 25          |
| Men's Skiff                         | 40         | 10                | 10            | 20          |
| Women's Skiff                       | 40         | 10                | 10            | 20          |
| Mixed Multihull                     | 40         | 10                | 10            | 20          |

15.3 If no boat passes Mark 1 before the Mark 1 Time Limit the race will be abandoned.

15.4 Boats failing to finish within the time stated in the Finish Window after the first boat sails the course and finishes will be scored Did Not Finish. This changes RRS 35, A4 and A5.

## 16. [DP] EQUIPMENT AND EQUIPMENT INSPECTION

16.1 The Equipment Regulations govern all equipment and equipment inspection matters.

- 16.2 In the event of a conflict between the ER and the Class Rules, the ER shall take precedence. This amends RRS 63.7.

## 17. OFFICIAL VESSELS

- 17.1 Official vessels will be marked as follows:

|                        |   |
|------------------------|---|
| Competition Management | Purple Sticker with 'RC' in white                                       |
| Technical Committee    | Green flag with 'Measurer' in white                                     |
| International Jury     | Purple flag with 'Jury' in white  |
| Medical                | White flag with 'Medical' in red  |
| Marshall               | Yellow Flag with 'Marshall' in black                                    |
| Media                  | White flag with either 'PRS' in black, 'Photo' in blue or 'RHB' in blue |
| <b>OBS</b>             | Green flag with 'OBS' in white  |
| Omega                  | White flag with 'TIMING' in red   |
| VIP                    | White flag with 'PRT' in black  |
| Principal Race Officer | Purple flag with 'PRO' in white   |
| Technical Delegate     | Purple flag with 'TD' in white  |
| Safety                 | Pink flag with 'Rescue' in red  |
| <b>Security</b>        | <b>Red flag with 'SEC' in white</b>                                     |

- 17.2 A boat shall not request redress due to the actions by any official vessel, drone or helicopter. This changes RRS 60.1(b).

## 18. SCORING

- 18.1 The Low Point System of RRS Appendix A will apply. RRS B8 is deleted.
- 18.2 When fewer than 3 opening series races have been completed, a boat's series score will be the total of her race scores. When 3 or more opening series races have been completed, a boat's series score will be the total of her race scores excluding her worst score. However, the score from any Medal Race will not be excluded.
- 18.3 A boat starting later than 4 minutes after her starting signal will be scored Did Not Start. This changes RRS A5.
- 18.4 1 race is required to be completed to constitute an Event.
- 18.5 To request a correction of an alleged error in posted race or series results, a boat may complete and submit a scoring enquiry available from the Race Officials Secretariat. Athletes' attention is drawn to SI 19.3.
- 18.6 Medal Race:
- 18.6.1 For the Medal Race RRS **A4** is changed so that the points are doubled. RRS **A5.2** is changed so that the scores are based on the number of boats assigned in that race and then doubled. Discretionary and standard penalties will not be doubled.

- 18.6.2 For boats assigned to compete in the medal race, ties will be broken by the Medal Race score. This changes RRS A8. For tied boats with the same points score in the Medal Race, ties will be broken applying RRS A8 to the opening series scores.
- 18.6.3 The boats competing in the medal race shall be ranked highest in the regatta. This may not apply to a boat disqualified under RRS 6, 69 or World Sailing Regulations 19 or 35.
- 18.6.4 A boat assigned to compete in the Medal Race shall make a genuine effort to start, sail the course and finish. The penalty for a breach of this instruction will be ranking the boat tenth in the regatta. If there are 2 such boats, they will be ranked ninth and tenth, in order of their opening-series ranks, and so on. This changes RRS A2 and A5.

## 19. PROTESTS, PENALTIES AND REQUESTS FOR REDRESS

- 19.1 Hearing request forms are available from the Race Officials Secretariat. Protests and requests for redress or reopening shall be delivered to the Race Officials Secretariat before the appropriate time limit.
  - 19.1.1 A link to an online system that will enable paperless submissions of protests, requests, scoring enquiries and declarations may be published. Submissions into this system will be considered as delivered to the **Race Officials Secretariat**.
- 19.2 The protest time limit for each Event is the number of minutes shown below after either a) the last boat has finished the last race of the day, or b) the Race Committee signals no more racing today, whichever is the later.

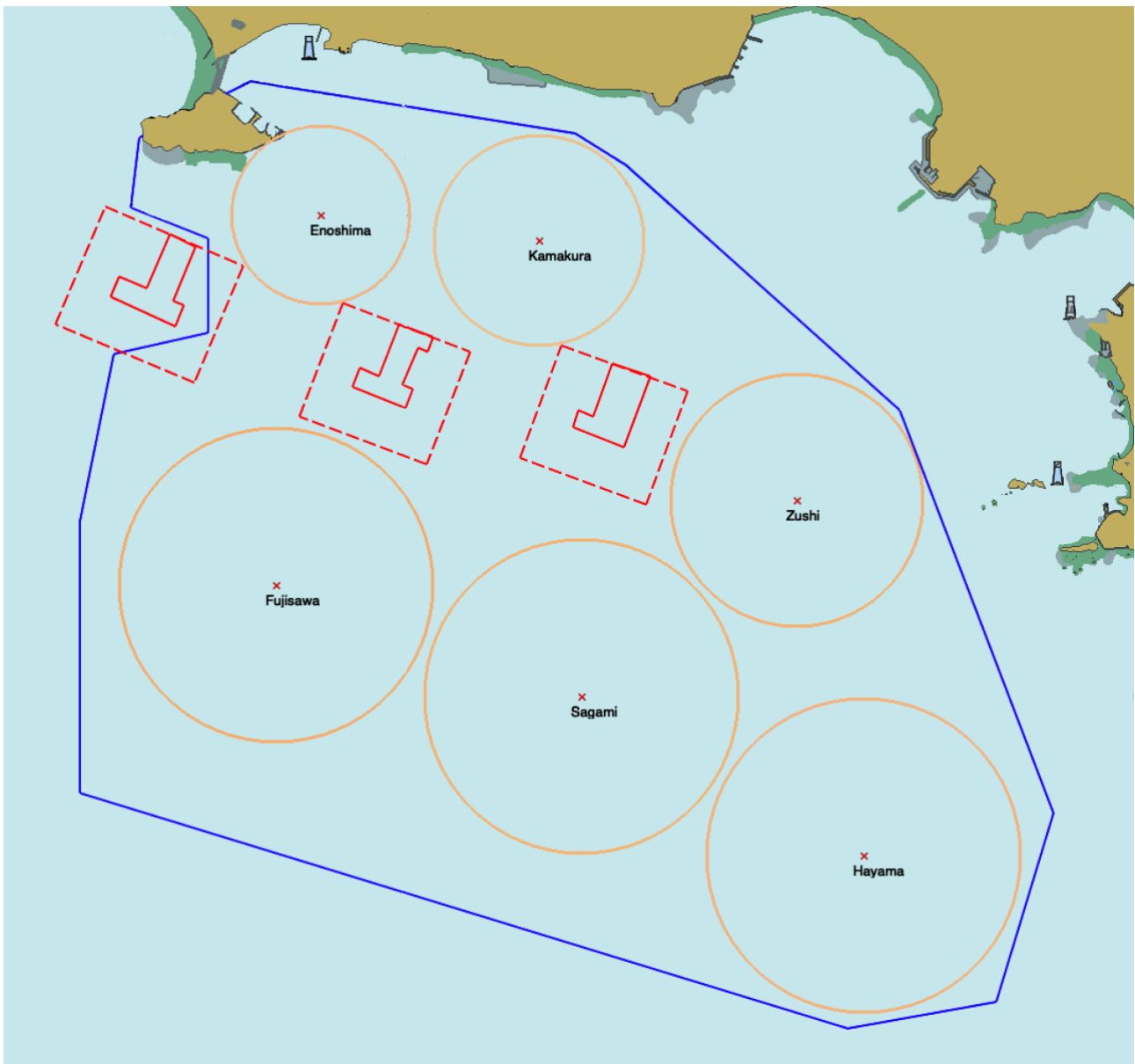
| Race Area                           | Time |
|-------------------------------------|------|
| Enoshima, Kamakura, Fujisawa, Zushi | 60   |
| Sagami, Hayama                      | 90   |

- 19.3 If an athlete requests correction of an alleged scoring error under SI 18.5, the time limit for any request for redress connected to that error remains the time limit under SI 19.2 unless the athlete submitted the scoring enquiry within that time. In that case, the time limit for requesting redress is then based on the time the athlete was notified of the answer to the scoring enquiry. This changes RRS 62.2.
- 19.4 Notices will be posted within 30 minutes of the protest time limit to inform competitors of hearings in which they are parties or named as witnesses. Hearings will be held in the stated **room** beginning at the time posted. Hearings may be scheduled to begin up to 30 minutes before the protest time limit.
- 19.5 A list of boats that have been penalized under Appendix P for breaking RRS 42 and under SI 19.8 will be posted.
- 19.6 Penalties for breaches of the class rules, or rules in the NoR and SIs marked [DP], or [SP] should the case go to a hearing, are at the discretion of the International Jury and may be less than disqualification.
- 19.7 Breaches of NoR 1.1 (COVID-19 provisions) and NoR 20 (Insurance) or rules in the SIs or NoR marked [NP] shall not be grounds for a protest by a boat. This changes RRS 60.1(a).
- 19.8 For breaches of a rule marked [SP], or listed in the list of standard penalties, the Race Committee or Technical Committee may apply a standard penalty without a hearing or a discretionary penalty may be applied by the International Jury with a hearing. A list of these breaches and the associated standard penalties will be posted on the Official Notice Board. However, the Race Committee or Technical Committee may protest a boat if it considers a standard penalty is inappropriate. A boat that has been penalised with a standard penalty

shall neither be protested by another boat for the same incident nor can another boat request redress for this committee action. This changes RRS 60.1, 63.1 and A5.

- 19.9 When a penalty is given under SI 19.6 or SI 19.8 before a race is started, the penalty will remain if that race is restarted or resailed. This changes RRS 36.
- 19.10 In RRS 62.2(a) and 66.2(a) change 'the last scheduled day of racing' to 'on the last scheduled day of the opening series for each Event'.
- 19.11 Any penalty or score adjustment imposed on the day of a medal race before boats go afloat will be notified by a notice in the launching area before flag D is displayed for that Event, or by a notice posted on the race committee vessel displaying flag L.

## SI Addendum A Race Areas



The locations of the racing areas shown above are indicative and may be changed significantly by the Organizing Authority should they prove to be unsuitable.

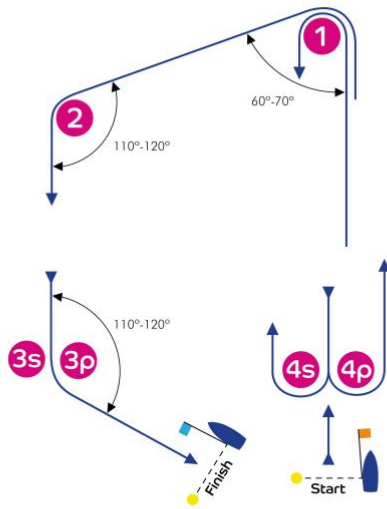
**SI Addendum B**  
**Competition Schedule**

|  | <b>Sunday, 25 July 2021</b> |   | <b>Monday, 26 July 2021</b> |   | <b>Tuesday, 27 July 2021</b> |   | <b>Wednesday, 28 July 2021</b> |   | <b>Thursday, 29 July 2021</b> |   | <b>Friday, 30 July 2021</b> |   |
|--|-----------------------------|---|-----------------------------|---|------------------------------|---|--------------------------------|---|-------------------------------|---|-----------------------------|---|
|  | Race Area<br>Warning Signal | # | Race Area<br>Warning Signal | # | Race Area<br>Warning Signal  | # | Race Area<br>Warning Signal    | # | Race Area<br>Warning Signal   | # | Race Area<br>Warning Signal | # |
| <b>Men's Windsurfer</b>                    | Enoshima<br>1200            | 3 | Kamakura<br>1500            | 3 | Reserve                      |   | Fujisawa<br>1200               | 3 | Kamakura<br>1515              | 3 | Reserve                     |   |
| <b>Women's Windsurfer</b>                  | Enoshima<br>1500            | 3 | Kamakura<br>1200            | 3 | Reserve                      |   | Fujisawa<br>1210               | 3 | Kamakura<br>1300              | 3 | Reserve                     |   |
| <b>Men's One Person Dinghy</b>             | Kamakura<br>1430            | 2 | Enoshima<br>1200            | 2 | Fujisawa<br>1210             | 2 | Reserve                        |   | Fujisawa<br>1200              | 2 | Enoshima<br>1430            | 2 |
| <b>Women's One Person Dinghy</b>           | Kamakura<br>1200            | 2 | Enoshima<br>1430            | 2 | Fujisawa<br>1200             | 2 | Reserve                        |   | Fujisawa<br>1210              | 2 | Enoshima<br>1200            | 2 |
| <b>Men's One Person Dinghy Heavyweight</b> |                             |   |                             |   | Kamakura<br>1300             | 2 | Zushi<br>1200                  | 2 | Enoshima<br>1430              | 2 | Reserve                     |   |
| <b>Men's Two Person Dinghy</b>             |                             |   |                             |   |                              |   | Enoshima<br>1200               | 2 | Zushi<br>1500                 | 2 | Zushi<br>1200               | 2 |
| <b>Women's Two Person Dinghy</b>           |                             |   |                             |   |                              |   | Enoshima<br>1445               | 2 | Enoshima<br>1200              | 2 | Zushi<br>1210               | 2 |
| <b>Men's Skiff</b>                         |                             |   |                             |   | Enoshima<br>1445             | 3 | Sagami<br>1200                 | 3 | Reserve                       |   | Kamakura<br>1200            | 3 |
| <b>Women's Skiff</b>                       |                             |   |                             |   | Enoshima<br>1200             | 3 | Sagami<br>1445                 | 3 | Reserve                       |   | Kamakura<br>1445            | 3 |
| <b>Mixed Multihull</b>                     |                             |   |                             |   |                              |   | Kamakura<br>1430               | 3 | Sagami<br>1200                | 3 | Reserve                     |   |

|  | <b>Saturday, 31 July 2021</b> |   | <b>Sunday, 1 August 2021</b> |   | <b>Monday, 2 August 2021</b> |   | <b>Tuesday, 3 August 2021</b> |   | <b>Wednesday, 4 August 2021</b> |   | <b>Thursday, 5 August 2021</b> |   |
|--|-------------------------------|---|------------------------------|---|------------------------------|---|-------------------------------|---|---------------------------------|---|--------------------------------|---|
|  | Race Area<br>Warning Signal   | # | Race Area<br>Warning Signal  | # | Race Area<br>Warning Signal  | # | Race Area<br>Warning Signal   | # | Race Area<br>Warning Signal     | # | Race Area<br>Warning Signal    | # |
| <b>Men's Windsurfer</b>                    | Enoshima<br>1530              | 1 | Reserve                      |   |                              |   |                               |   |                                 |   |                                |   |
| <b>Women's Windsurfer</b>                  | Enoshima<br>1430              | 1 | Reserve                      |   |                              |   |                               |   |                                 |   |                                |   |
| <b>Men's One Person Dinghy</b>             | Reserve                       |   | Enoshima<br>1430             | 1 | Reserve                      |   |                               |   |                                 |   |                                |   |
| <b>Women's One Person Dinghy</b>           | Reserve                       |   | Enoshima<br>1530             | 1 | Reserve                      |   |                               |   |                                 |   |                                |   |
| <b>Men's One Person Dinghy Heavyweight</b> | Sagami<br>1200                | 2 | Fujisawa<br>1500             | 2 | Reserve                      |   | Enoshima<br>1430              | 1 | Reserve                         |   |                                |   |
| <b>Men's Two Person Dinghy</b>             | Reserve                       |   | Zushi<br>1210                | 2 | Fujisawa<br>1430             | 2 | Reserve                       |   | Enoshima<br>1430                | 1 | Reserve                        |   |
| <b>Women's Two Person Dinghy</b>           | Reserve                       |   | Zushi<br>1200                | 2 | Enoshima<br>1200             | 2 | Reserve                       |   | Enoshima<br>1530                | 1 | Reserve                        |   |
| <b>Men's Skiff</b>                         | Enoshima<br>1200              | 3 | Reserve                      |   | Enoshima<br>1530             | 1 | Reserve                       |   |                                 |   |                                |   |
| <b>Women's Skiff</b>                       | Kamakura<br>1200              | 3 | Reserve                      |   | Enoshima<br>1430             | 1 | Reserve                       |   |                                 |   |                                |   |
| <b>Mixed Multihull</b>                     | Zushi<br>1200                 | 3 | Enoshima<br>1200             | 3 | Reserve                      |   | Enoshima<br>1530              | 1 | Reserve                         |   |                                |   |

## SI Addendum C Course Diagrams

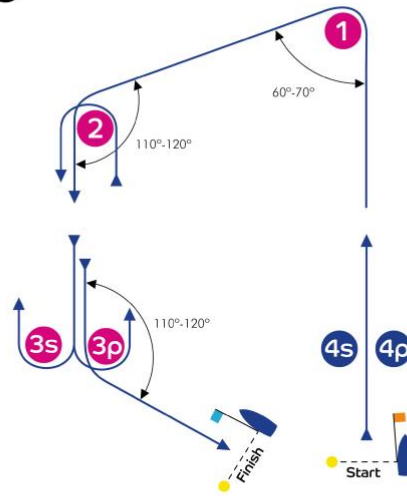
I



Course: Inner Trapezoid

| Signal | Mark Rounding Order   |
|--------|---|
| I2     | Start - 1 - 4s/4p - 1 - 2 - 3p - Finish                         |
| I3     | Start - 1 - 4s/4p - 1 - 4s/4p - 1 - 2 - 3p - Finish             |
| I4     | Start - 1 - 4s/4p - 1 - 4s/4p - 1 - 4s/4p - 1 - 2 - 3p - Finish |

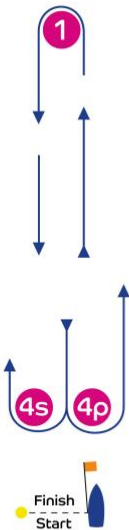
O



Course: Outer Trapezoid

| Signal | Mark Rounding Order   |
|--------|---|
| O2     | Start - 1 - 2 - 3s/3p - 2 - 3p - Finish                         |
| O3     | Start - 1 - 2 - 3s/3p - 2 - 3s/3p - 2 - 3p - Finish             |
| O4     | Start - 1 - 2 - 3s/3p - 2 - 3s/3p - 2 - 3s/3p - 2 - 3p - Finish |

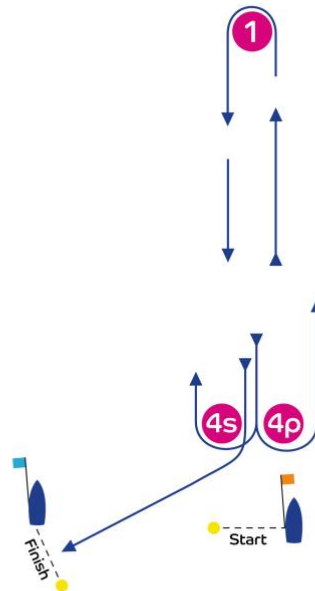
L



Course: Windward/Leeward

| Signal | Mark Rounding Order                                    |
|--------|--|
| L2     | Start - 1 - 4s/4p - 1 - Finish                         |
| L3     | Start - 1 - 4s/4p - 1 - 4s/4p - 1 - Finish             |
| L4     | Start - 1 - 4s/4p - 1 - 4s/4p - 1 - 4s/4p - 1 - Finish |

LG

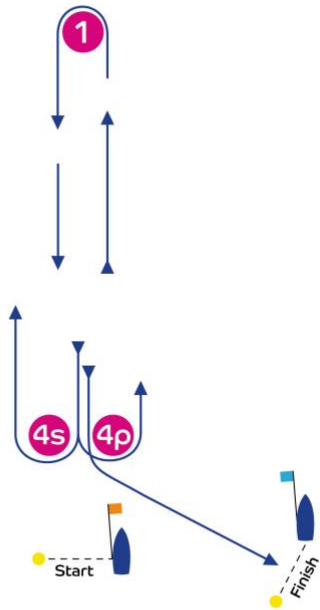


Course: Windward/Leeward

| Signal | Mark Rounding Order   |
|--------|---|
| LG2    | Start - 1 - 4s/4p - 1 - 4s - Finish                         |
| LG3    | Start - 1 - 4s/4p - 1 - 4s/4p - 1 - 4s - Finish             |
| LG4    | Start - 1 - 4s/4p - 1 - 4s/4p - 1 - 4s/4p - 1 - 4s - Finish |



# LR



Course: Windward/Leeward

| Signal | Mark Rounding Order   |
|--------|---|
| LR2    | Start - 1 - 4s/4p - 1 - 4p - Finish                         |
| LR3    | Start - 1 - 4s/4p - 1 - 4s/4p - 1 - 4p - Finish             |
| LR4    | Start - 1 - 4s/4p - 1 - 4s/4p - 1 - 4s/4p - 1 - 4p - Finish |

# LA



Course: Same as Course L except with Offset Mark 1A

| Signal | Mark Rounding Order  |
|--------|--|
| LA2    | Start - 1 - 1a - 4s/4p - 1 - 1a - Finish                                   |
| LA3    | Start - 1 - 1a - 4s/4p - 1 - 1a - 4s/4p - 1 - 1a - Finish                  |
| LA4    | Start - 1 - 1a - 4s/4p - 1 - 1a - 4s/4p - 1 - 1a - 4s/4p - 1 - 1a - Finish |

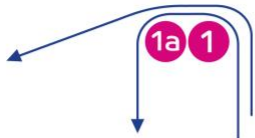
# LR A



Course: Same as Course LR except with Offset Mark 1A

| Signal | Mark Rounding Order   |
|--------|---|
| LR A2  | Start - 1 - 1a - 4s/4p - 1 - 1a - 4p - Finish                                   |
| LR A3  | Start - 1 - 1a - 4s/4p - 1 - 1a - 4s/4p - 1 - 1a - 4p - Finish                  |
| LR A4  | Start - 1 - 1a - 4s/4p - 1 - 1a - 4s/4p - 1 - 1a - 4s/4p - 1 - 1a - 4p - Finish |

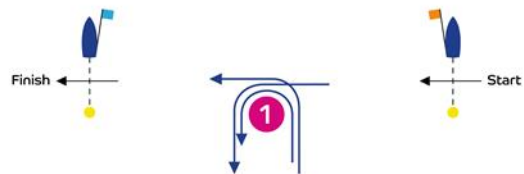
# IA



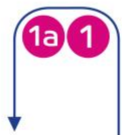
Course: Same as Course I except with Offset Mark 1A

| Signal | Mark Rounding Order   |
|--------|---|
| IA2    | Start - 1 - 1a - 4s/4p - 1 - 1a - 2 - 3p - Finish                                   |
| IA3    | Start - 1 - 1a - 4s/4p - 1 - 1a - 4s/4p - 1 - 1a - 2 - 3p - Finish                  |
| IA4    | Start - 1 - 1a - 4s/4p - 1 - 1a - 4s/4p - 1 - 1a - 4s/4p - 1 - 1a - 2 - 3p - Finish |

# WRS



# LGA



Course: Same as Course LG except with Offset Mark 1A

| Signal | Mark Rounding Order   |
|--------|---|
| LGA2   | Start - 1 - 1a - 4s/4p - 1 - 1a - 4s - Finish                                   |
| LGA3   | Start - 1 - 1a - 4s/4p - 1 - 1a - 4s/4p - 1 - 1a - 4s - Finish                  |
| LGA4   | Start - 1 - 1a - 4s/4p - 1 - 1a - 4s/4p - 1 - 1a - 4s/4p - 1 - 1a - 4s - Finish |



Course: Windward/Leeward with Reaching Start/Finish

| Signal | Mark Rounding Order                                    |
|--------|--|
| WRS1   | Start - 1 - 4s/4p - 1 - Finish                         |
| WRS2   | Start - 1 - 4s/4p - 1 - 4s/4p - 1 - Finish             |
| WRS3   | Start - 1 - 4s/4p - 1 - 4s/4p - 1 - 4s/4p - 1 - Finish |

## SI Addendum M Medal Racing

### M1 Sailing Instructions

M1.1 Delete SI 12.4 and replace with:

RRS 26 and Preparatory Signals in Race Signals are deleted. Races will be started using the following signals. Times shall be taken from the display of visual signals. This changes RRS 26, Race Signals and RRS P5.2(c).

| <i>Minutes before starting signal</i> | <i>Visual signal displayed</i> | <i>Visual signal removed</i>                                     | <i>Sound signal</i> | <i>Means</i>                 |
|---------------------------------------|--------------------------------|--|---------------------|------------------------------|
| 4                                     | Event flag                     |  | No sound            | Event to start               |
|                                       | P, U, or Black flag            |  |                     | Starting Penalty<br>P = None |
|                                       | O or R flag, if applicable     |  |                     | RRS P5 (RRS 42)              |
| 3                                     | Pink flag with number 3        |  | 1                   | Warning Signal               |
| 2                                     | Red flag with number 2         | Pink flag  | 1                   | Preparatory Signal           |
| 1                                     | Yellow flag with number 1      | Red flag   | 1 long              | 1 minute                     |
| 0                                     | Green flag                     | Yellow flag  | 1                   | Starting Signal              |
| +1                                    |                                | Green flag,<br>Event flag,<br>P, U or Black flag,<br>O or R flag | No sound            |                              |

M1.2 Delete SI 4.1 and replace with:

“Notices to competitors will be posted on either:

M1.2.1 the Official Notice Board before Flag D is displayed, or

M1.2.2 the race committee starting vessel, after Flag D is displayed.”