



The **International Soling Association** and the **Veleiros do Sul Associação Náutica Desportiva** have the pleasure to invite you to participate in the:

2025 **OPEN** SOLING WORLD CHAMPIONSHIP

Provisory Notice of Race

16 – 23/November/2025 at Porto Alegre, RS, Brazil

Sponsored by: **TBD**

The notation '[NP]' in a rule means that a boat may not protest another boat for breaking that rule. This changes RRS 60.1(a).

1. RULES

- 1.1. This ISC is governed by the rules as defined in *The Racing Rules of Sailing*.
- 1.2. The following documents will apply:
 - The Soling Class Rules (SCR) World Sailing Soling Class Rules
 - ISA Championship Manual (ICM) www.soling.com
 - The Notice of Race (NoR) www.vds.com.br
 - The Sailing Instructions (SI) www.vds.com.br
 - Changes to the SI Event website and official noticeboard
- 1.3. The following RRS are changed: 31, 32, 35, 42.3(c.1), 44.1, 62, 63.7, A4, A5.
 - a) RRS 31 is altered to: "While racing, neither the crew nor any part of a boat's hull shall touch a starting mark before starting, a mark that begins, bounds or ends the leg of the course on which she is sailing, or a finishing mark after finishing. In addition, while racing, a boat shall not touch a race committee vessel that is also a Mark."
 - b) *RRS 63.7 is changed as follows:* When there is a conflict between the NoR and the SI the SI will take precedence.
 - c) RRS 42.3(c1) is changed conform SCR C.9.1 as permitted by RRS 86.1(c).
 - d) Other changes will appear in full in the SI. The SI may also change other racing rules.
- 1.4. SCR C.1.1. is changed as follows: The crew shall consist of three persons.
- 1.5. The National Prescription will apply: see in [https://www.sailing.org/tools/documents/PrescriptionsCBVELA20212024BR AZIL-\[27220\].pdf](https://www.sailing.org/tools/documents/PrescriptionsCBVELA20212024BR AZIL-[27220].pdf).

2. SAILING INSTRUCTIONS

- 2.1. The SI will be available after 17h on 15/11/2025 at race office and on the event <https://campeonatos.vds.com.br/2025-soling-world-championship>.
<https://www.solingworlds.com/>



VELEIROS DO SUL - Associação Náutica Desportiva

Av. Guaíba, nº 2941, Vila Assunção | Porto Alegre/RS | CEP: 91900-420

Fone: (51) 3265.1733 | www.vds.com.br | @veleirosdosul





3. COMMUNICATION

3.1. The official notice board is located:

- (a) at Veleiros do Sul in front of the Race Office.
- (b) Online: WhatsApp Group
<https://chat.whatsapp.com/EMF9Ddk1YIK7MbLa4z3D76> or QR Code at Addendum 3.

3.2. [DP] From the first warning signal until the end of the last race of the day:

- Except in an emergency, a boat shall not make voice or data transmissions and shall not receive voice or data communication that is not available to all boats.
- Boats may require carrying, above the floor, a tracking device or smartphone with a specific tracking system installed and running with devices fully charged. If a boat has no access to a suitable device, the OA or ISA will supply a device.

4. ELIGIBILITY AND ENTRY

4.1. The ISC is open to all boats of the International Soling Class the PART B Preamble.

- Boats may enter the ISC by registering online at:
<https://www.solingworlds.com/>
<https://forms.gle/mEkMVNLFgQ94oYnA7>

4.2. To be considered an entry in the ISC, a boat must complete all registration requirements and pay all fees.

4.3. Late entries will be accepted only with the approval of both ISA and the OA.

4.4. No restrictions on the number of boats apply.

5. FEES

5.1. Entry fees, including:

- €75.- ISA fee
- The race schedule can include an eventual practice race
- Inspection
- Craning
- Mooring or docking
- Parking for trailers and at least one vehicle/car per team
- Three Social events:
 - Opening ceremony
 - ISC dinner
 - Prizegiving/closing ceremony,



VELEIROS DO SUL - Associação Náutica Desportiva

Av. Guaíba, nº 2941, Vila Assunção | Porto Alegre/RS | CEP: 91900-420

Fone: (51) 3265.1733 | www.vds.com.br | @veleirosdosul





are as follows:

TYPE OF ENTRY	FEE	CONDITION
Early Entry	€ 475,00	Registered and fully paid before 31/August/2025 .
Nominal Entry	€ 675,00	Registered and fully paid between 01/September/2025 and 17/November/2025 .
Young Teams	€ 300,00	Registered and fully paid before 31/August/2025 for Soling teams whose combined age is under one hundred years on the first scheduled day of racing.
Support Person	€ 50,00	Registered and fully paid before 17/November/2025 .
Late Entry	The ISA does not allow late entry fees!	

5.2 Payment - **Fees can be paid with international credit card on line link TBD or national entries by pix CNPJ 92.948.785-0001-47.**

6. CREW LIMITATIONS

6.1. No limitations.

7. ADVERTISING

- 7.1. Boats may be required to display advertising chosen and supplied by the OA.
 7.2. The OA may provide bibs that competitors are required to wear as permitted by the WS Advertising Code.

8. QUALIFYING SERIES AND FINAL SERIES

8.1. The championship will be a single serie.

9. SCHEDULE

9.1. Registration and equipment inspection:

DATE	FROM	TILL	FROM	TILL
16th/November/2025 – Sunday	09 hours	12 hours	14 hours	18 hours
17th/November/2025 – Monday	09 hours	12 hours	14 hours	18 hours
18th/November/2025 – Tuesday	09 hours	12 hours		

9.2. Dates of racing:

DATE	Scheduled number of races	Scheduled times
18/November/2025 – Tuesday,	Practice Race	15:00
19/November/2025 - Wednesday	2 races	14:00
20/November/2025 - Thursday	2 races	13:00
21/ November /2025 - Friday	2 races	13:00
22/ November /2025 - Saturday	2 races	13:00
23/ November /2025 - Sunday	1 race	13:00



VELEIROS DO SUL - Associação Náutica Desportiva

Av. Guaíba, nº 2941, Vila Assunção | Porto Alegre/RS | CEP: 91900-420

Fone: (51) 3265.1733 | www.vds.com.br | @veleirosdosul





Social Events:

DATE	Event	Time
18th/November/2025 – Tuesday	Skippers Meeting	13:00
	Opening Ceremony	18:00
19th to 21st/November/2025	Daily after sail	after sail
22nd/November/2025 - Saturday	Championship Dinner	20:00
23rd November/2025 - Sunday	Prize giving	18:00

- 9.4. Two (2) races on any given day of racing during the Championship. However, they may sail three races from the second day on in order to bring the series back to, or towards, the published schedule of races.
- 9.5. On the last scheduled day of racing no warning signal will be made after 16:00 hours.

10. INSPECTION AND MEASUREMENT

- 10.1. Each boat shall produce or verify the existence of a valid measurement certificate. (International Soling Class Measurement Form).
- 10.2. [DP] Boats shall be available for inspection from **16/11/2025** at 9 hours.
- 10.3. Boats may be inspected at all times.
- 10.4. Equipment will be inspected according to ICM G9 ISA Championship dates and number of races and **SCR**.
- 10.5. [DP] Boats shall also comply with RRS 78.1 when presented for inspection.

11. CLOTHING AND EQUIPMENT

- 11.1. Not applicable.

12. VENUE

- 12.1. Regatta harbor include:
- a) Clubhouse: Veleiros do Sul Av. Guaíba, 2941 – Vila Assunção – Porto Alegre, RS , Brasil
 - b) Jury room: At Conselho Deliberativo Room
 - c) Inspection área: At hangar 1
 - d) Moorings: At trapiche 01
 - e) Parking for trailers and at least one vehicle/car per team: Parking of Veleiros do Sul
 - f) Race office: At secretaria Esportiva
 - g) Registration office At secretaria Esportiva
- 12.2. Race area(s) - **NoR Addendum 1** shows the location of the racing areas. Races will be sailed on Pedra Redonda Bay at Rio Guaíba.



VELEIROS DO SUL - Associação Náutica Desportiva

Av. Guaíba, nº 2941, Vila Assunção | Porto Alegre/RS | CEP: 91900-420

Fone: (51) 3265.1733 | www.vds.com.br | @veleirosdosul





13. COURSES

- 13.1. The courses to be sailed will be as described in the **NoR Addendum 2** and at the SI.
- 13.2. The marks that may be used are as stated in the SI.

14. PENALTY SYSTEM

- 14.1. RRS 44.1 is changed so that the Two-Turns Penalty is replaced by the One-Turn Penalty.
- 14.2. An IJ will be appointed provided in RRS 70.5.

15. SCORING

- 15.1. The Low Point System of Appendix A will be used.
- 15.2. Ten (10) races are scheduled. Five (05) races are required to be completed to constitute a series.
- 15.3. When:
 - a) Fewer than six (6) races have been completed, a boat's series score is the total of her race scores.
 - b) Six (6) or more races have been completed, a boat's series score is the total of her race scores excluding her worst score.

16. SUPPORT PERSON VESSELS

- 16.1. [DP] Support person vessels shall be marked with numerical sticker.

17. CHARTERED OR LOANED BOATS

- 17.1. A chartered or loaned boat may carry national letters or a sail number in contravention of her class rules, provided that the race committee has approved her sail identification before the first race.

18. BERTHING

- 18.1. [DP] Boats shall be kept in their assigned places while in the harbor.

19. HAUL-OUT RESTRICTIONS

- 19.1. [DP] Boats shall not be hauled out during the ISC except with and according to the terms of the prior written permission of the race committee.

20. DIVING EQUIPMENT AND PLASTIC POOLS

- 20.1. [DP] Underwater breathing apparatus and plastic pools or their equivalent shall not be used around boats between the preparatory signal of the first race and the end of the ISC.





21. DATA PROTECTION

- 21.1. General Data Protection Regulation (GDPR), or its equivalent when the ISC is outside a country of the European Union, will apply.
- 21.2. By participating in this event and signing the LGPD privacy statement on the registration form, I authorize the organizer to use the data requested in the registration form for specific purposes of disclosing results and competition news, in accordance with the Brazilian General Protection Law Data.

22. RISK STATEMENT

- 22.1. RRS 3 states: 'The responsibility for a boat's decision to participate in a race or to continue to race is hers alone.' By participating in this event each competitor agrees and acknowledges that sailing is a potentially dangerous activity with inherent risks. These risks include strong winds and rough seas, sudden changes in weather, failure of equipment, boat handling errors, poor seamanship by other boats, loss of balance on an unstable platform and fatigue resulting in increased risk of injury. **Inherent in the sport of sailing is the risk of permanent, catastrophic injury or death by drowning, trauma, hypothermia, or other causes.**

23. INSURANCE

- 23.1. Each participating Soling or support person vessel shall be insured with valid third-party liability insurance per incident or the equivalent.

24. PRIZES

- 24.1. Daily first place prizes for each race.
- 24.2. **Overall prizes** to first, second, third, fourth and fifth places will be awarded, according to the Championship rules, these prizes must be for each member of the team in equal sizes.
- 24.3. **The Perpetual World Championship Trophy.** To the winning team of ISA World Championship.
- 24.4. **The World Championship Trophy Personal Copies** - Keepers, annually donated by the ISA to the winning team members of the World Championship Trophy.
- 24.5. **The Perpetual Paul Elvstrøm Trophy** donated by the Cercle de Voile de Paris to the best scoring helmsman, aged 35 years or under on the first scheduled day of racing, at the conclusion of ISA World Championship.
- 24.6. **The Perpetual Tony Clare Trophy** - donated by Tony Clare (GBR) to the best scoring boat with a woman on board, at the conclusion of ISA World Championship
- 24.7. **The Perpetual KC1 Classic Trophy** awarded to the best scoring boat, built before January 1st of 1980, at the conclusion of ISA World Championship.



VELEIROS DO SUL - Associação Náutica Desportiva

Av. Guaíba, nº 2941, Vila Assunção | Porto Alegre/RS | CEP: 91900-420

Fone: (51) 3265.1733 | www.vds.com.br | @veleirosdosul





- 24.8 - **The Perpetual Jose Lucio Glomb Trophy** to best scoring South American team, at the conclusion of ISA World Championship.
- 24.9 **The Perpetual Master trophy** to the best scoring team at the conclusion of ISA World Championship. With helmsperson age between 50 and 64 and, the aggregated ages of all team members must be greater or equal then 120 year, on the first scheduled day of racing.
- 24.10 - **The Perpetual Grand Master Bowl trophy** to the best scoring team at the conclusion of ISA World Championship. With helmsperson age higher than 64, the aggregated ages of all team members must be greater or equal then 120 year, on the first scheduled day of racing.

25. FURTHER INFORMATION

25.1. For further information:

- a) Please contact: Secretaria esportiva Telephone: +55 51 3265-1733 ou +55 51 3265.1717
WhatsApp +55 51 3268.3697
Email: esportiva@vds.com.br
Home page: www.vds.com.br
Secretaria Esportiva: Odécio Carlos Adam or Bruna Guerra
- b) About accommodation is available on the **Addendum 03** or ISC website.



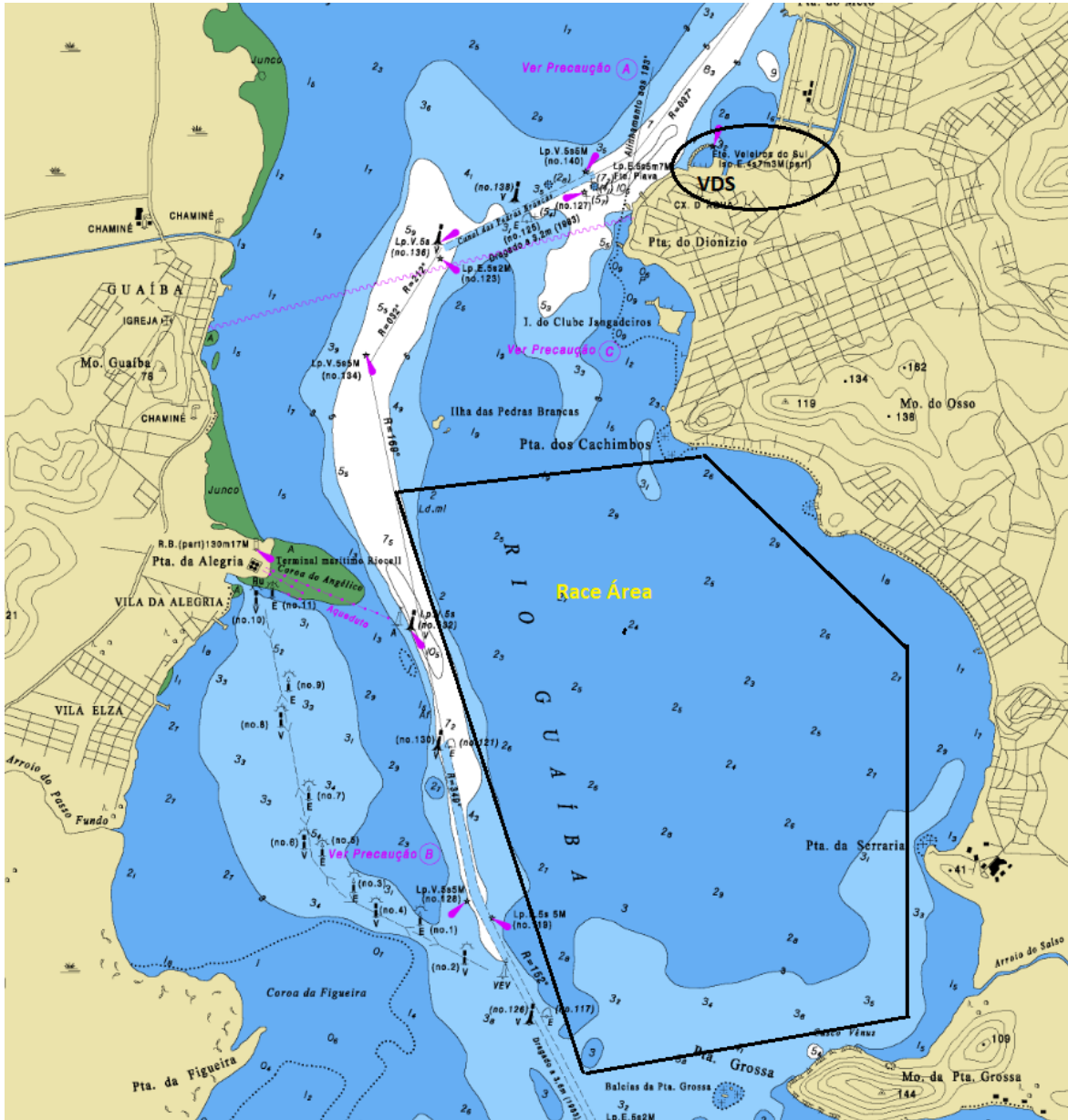
VELEIROS DO SUL - Associação Náutica Desportiva

Av. Guaíba, nº 2941, Vila Assunção | Porto Alegre/RS | CEP: 91900-420

Fone: (51) 3265.1733 | www.vds.com.br | [@veleirosdosul](https://www.instagram.com/veleirosdosul)

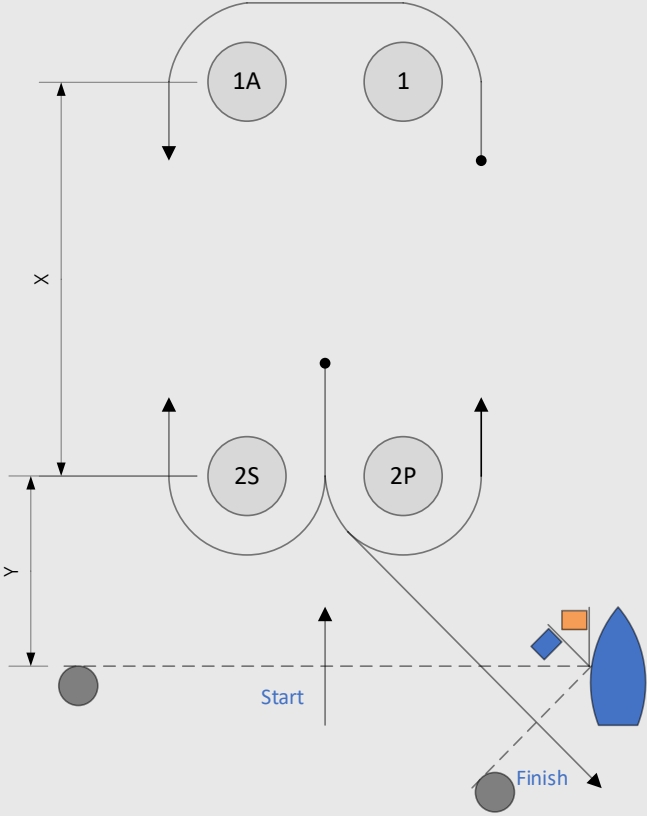


Race area(s) - NoR Addendum 1



NoR Addendum 2 – DIAGRAM COURSES

The diagram below shows the courses including the approximate angles between legs, the order in which marks are to be passed, and the side on which each mark is to be left. Also, the approximate course length is shown.

COURSE: WINDWARD/LEEWARD WITH OFFSET AND DOGLEG FINISH		
		
COURSE SIGNAL	2	3
COURSE LENGTH X	1 – 1.3 NM.	0.8 – 1.3 NM.
COURSE LENGTH Y	0.05 – 0,10 NM.	
COURSE LENGTH LIMITATIONS	The race committee may not change the distance between marks 1 and 2, under C (≡), below the minimum or above the maximum of course length X.	
MARK SEQUENCE	Start – 1 – 1A – 2S/2P – 1 – 1A – 2P – Finish	Start – 1 – 1A – 2S/2P – 1 – 1A – 2S/2P – 1 – 1A – 2P – Finish
MARKS ROUNDING	All marks rounded to port. Marks 2S/2P will be a gate	



NoR Addendum 3 – WhatsApp Group



2025 Soling World Championship

Grupo do WhatsApp



VELEIROS DO SUL - Associação Náutica Desportiva

Av. Guaíba, nº 2941, Vila Assunção | Porto Alegre/RS | CEP: 91900-420

Fone: (51) 3265.1733 | www.vds.com.br | [@veleirosdosul](https://www.instagram.com/veleirosdosul)



Addendum .04 - ACCOMMODATION INFO (Not part of the Notice of Race)

1. ACCOMMODATION

1.1. Collective Accommodation for Veleiros do Sul - Rate of R\$ 70,00 per day per person

- Lodging 1 - 8 places
- Lodging 2 - 10 places
- Lodging 3 - 16 places
- Lodging 4 - 8 places
- Lodging 5 - 16 places
- Lodging 6 - 14 places

- a) 72 places will be available for accommodation with a daily rate of **R\$ 70,00 per person. The reservations must be made by the representative of the Club/Fleet/State for the entire group** using the accommodation request form which is in Annex F of this Notice of Race. **No reservations will be made individually by parents or sailors.**
- b) **The clubs associated with Veleiros do Sul will have preference in accommodation reservations up to 60 days prior to the date of the event.** After that, reservations will be made in chronological order of the request.
- c) Payments must be made up to 5 days after confirmation of the vacancy by Veleiros do Sul.
- d) The club provides pillow, sheet, and blanket.
- e) Each guest must bring personal hygiene items and a towel.



1.2. Casa da Nena (3.8 Km from the Club) - House with capacity for up to 4 people

Rua Prof. Xavier Simões, 280 - Bairro Sétimo Céu (with a spectacular view of the Pedra Redonda Bay)

Phone: +55 5199955.4414 **contact Nena** nenakpires@gmail.com

1.3. Casa Sr. Sergio Steiner e Lílian Steiner (distant 3,2 Km from the Club) - House for 6 people

Rua Dr. Armando Barbedo, 54 - Bairro Tristeza

Phone: +55 51 3222.5184 with Lilian +55 51 9959. 9521 or Sérgio Steiner +55 51 9639.3231

sergio.steiner54@gmail.com

1.4. Double Tree by Hilton Porto Alegre (2 km away)

Av. Padre Cacique, 2703 - Praia de Belas, Porto Alegre - RS, 90810-240-(51) 2042-0265

<https://www.hilton.com/en/hotels/poabrdt-doubletree-porto-alegre/>

1.5. Millenium Flat Blue Tree Hotels - 6,2 km from the Club

Borges de Medeiros, 3120 - Bairro Praia de Belas

Phone: (+55 51) 3026.2200 Email vendas@bluetree.com.br

Home: www.bluetree.com.br



Tel: (51) 3026.2200 | Fax: (51) 3026-6704 | Cel: (51)9674 6394 lsilva@bluetree.com.br
Reservations: 3018-1848 (SP) | other locations 0300-150500

1.6. Confort Inn Hotel (Rede Atlântica De Hotéis) - 9.2 Km from the Club and close to bars and restaurants

Loureiro da Silva, 1660- Bairro Cidade Baixa - Porto Alegre - RS - 90050-240
afavero@hoteldireto.com - www.atlanticahotels.com.br
Tel: (+55 51) 2117-9008 Fax: (+55 51) 2117-9001

1.7. Intercity Premium - 8 Km from the Club

AV. Borges de Medeiros, 2105 - Bairro Praia de Belas - Porto Alegre
Phone/Fax: (+55 51) 3022.9100 / 0800.600.7700
Site: www.intercityhoteis.com.br - E-mail: poa.prm@intercityhotel.com.br

1.8. Coral Tower Express - 7,8 Km from the Club.

Getúlio Vargas, 318 - Bairro Menino Deus - Porto Alegre, RS
51 3226.5536 express@coraltower.com.br

1.9. Hotel Continental Porto Alegre - 10Km away, in front of the bus station)

Largo Vespasiano Julio Veppo, 77 - Porto Alegre
Contact: Matheus Lemos
Phone: + 55 51 3027.1906 cell phone: +55 51 9515.1519
www.hoteiscontinental.com.br executivo1@hoteiscontinental.com.br

1.10. Metropolis Apart Hotel - Km away from the Club.

Rua Leopoldo Bier, 311 - Bairro Santana - Porto Alegre - RS, 90620-100
51 3029.6353 reservas@metropolisaparthotel.com.br

1.11. Eko Residence Hotel

Avenida Desembargador André da Rocha, 131, Porto Alegre
Phone: 51 3215.7737 <http://www.ekoresidence.com.br/novo/>
Eko Residence is a modern ecological hotel that is 15 minutes by car from the Porto Alegre Airport. It uses solar energy and cisterns to cause the least environmental impact possible.
1.13 Tulip Inn Centro Histórico
Rua Senhor dos Passos, 105, Porto Alegre
<http://www.tulipinncentrohistorico.com/pt-pt>
tich.reservas@goldentulip.com.br
Telephone: +55 51 30130303 +55 5130130303 reservations: +55 11 2627 6363
Tulip Inn Centro Histórico offers air-conditioned accommodation with free Wi-Fi. It is located in Porto Alegre, 1.5 km from Mercado subway station.

1.12. A complete listing of the hotel chain and information about Porto Alegre is available on the website:

Convention & Visitors Bureau Porto Alegre <https://www.visiteportoalegre.com/bemvindos>



VELEIROS DO SUL - Associação Náutica Desportiva

Av. Guaíba, nº 2941, Vila Assunção | Porto Alegre/RS | CEP: 91900-420

Fone: (51) 3265.1733 | www.vds.com.br | [@veleirosdosul](https://www.instagram.com/veleirosdosul)





Addendum 4 - VDS Hosting Request Form

ADDITIONAL INFORMATION (NOT PART OF THE NOTICE OF THE RACE).

1. ACCOMMODATION

- 1.1. Spaces will be available in the club's collective sailors' accommodation.
- 1.2. Reservation requests must be made up to 10 days before the event by the boat captain by filling out form FOR 46-A in Appendix 4 and sending to e-mail reservas@vds.com.br
- 1.3. The club provides pillows, sheets and blankets.
- 1.4. Each guest must bring personal hygiene items and a towel.




VELEIROS DO SUL - Associação Náutica Desportiva

Av. Guaíba, nº 2941, Vila Assunção | Porto Alegre/RS | CEP: 91900-420

Fone: (51) 3265.1733 | www.vds.com.br | [@veleirosdosul](https://www.instagram.com/veleirosdosul)



		SOLICITAÇÃO DE HOSPEDAGEM						FOR-46A		
ALOJAMENTO MARINHEIRO COLETIVO DO CLUBE VELEIROS DO SUL										
Data: ___/___/___										
Solicito vaga(s) de hospedagem para o seguinte evento:										
Nome do solicitante:										
Função do Solicitante no clube ou Flotilha:										
E-mail:					Telefone:					
Enviar essa solicitação por email para o endereço reservas@vds.com.br .										
Alojamento Masculino										
Nº	Nome completo	Função: V=velejador T=Técnico TL=Team	Clube	Estado País	Classe	Data Chegada	Data Saída	nº Diárias	Valor Dia R\$	Pagto
1								0	80,00	0,00
2								0	80,00	0,00
3								0	80,00	0,00
4								0	80,00	0,00
5								0	80,00	0,00
6								0	80,00	0,00
7								0	80,00	0,00
8								0	80,00	0,00
9								0	80,00	0,00
10								0	80,00	0,00
11								0	80,00	0,00
12								0	80,00	0,00
Alojamento Feminino										
Nº	Nome completo	Função: V=velejador T=Técnico TL=Team Leader	Clube	Estado País	Classe	Data Chegada	Data Saída	nº Diárias	Valor Dia R\$	Pagto
1								0	80,00	0,00
2								0	80,00	0,00
3								0	80,00	0,00
4								0	80,00	0,00
5								0	80,00	0,00
6								0	80,00	0,00
7								0	80,00	0,00
8								0	80,00	0,00
9								0	80,00	0,00
10								0	80,00	0,00
11								0	80,00	0,00
12								0	80,00	0,00